

# East Lethbridge

## Catholic Parish Assessment Project

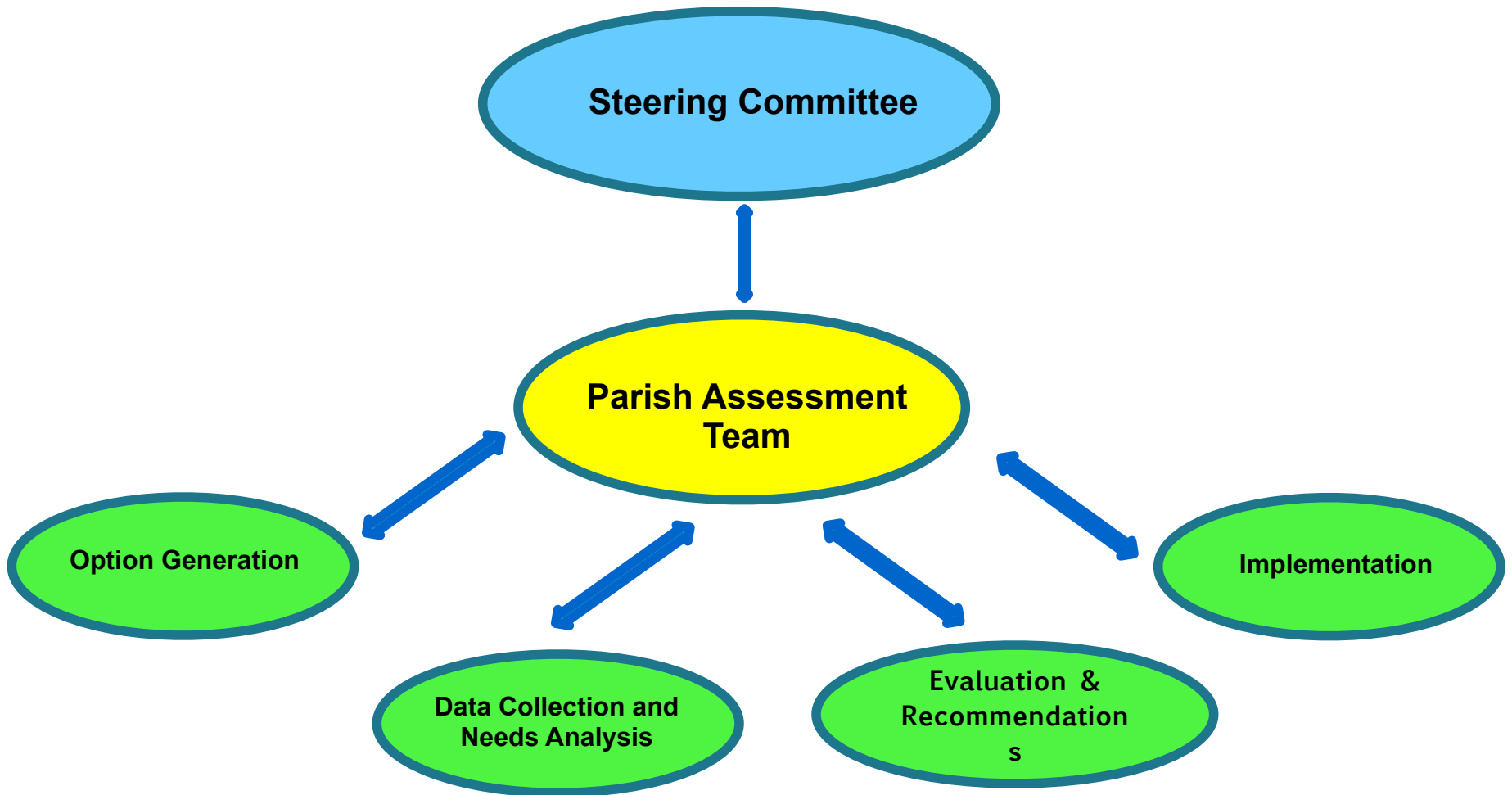
Project Organization Structure

Feb 25, 2023

(updated Jan 16, 2024)

Final

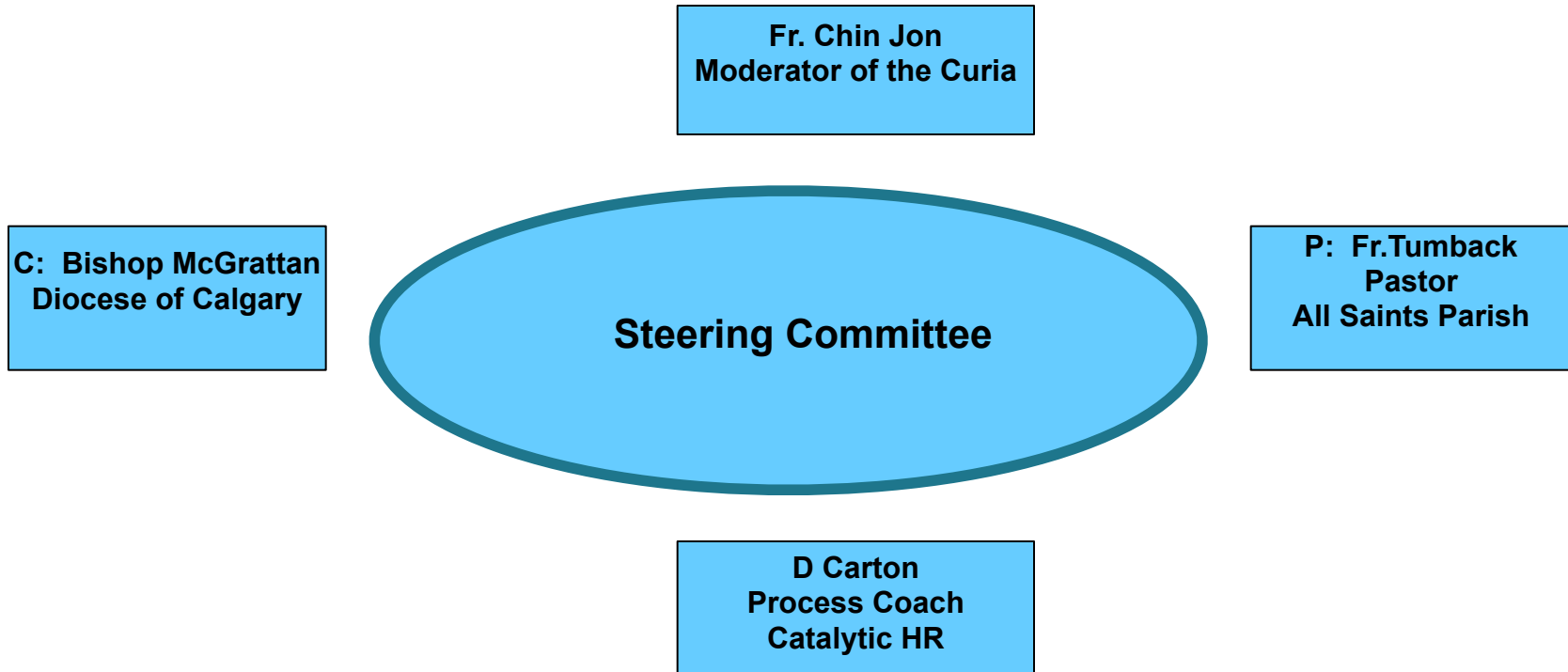
# East Lethbridge Catholic Parish Assessment Project Organization Structure



Additional support  
to be called on as  
needed

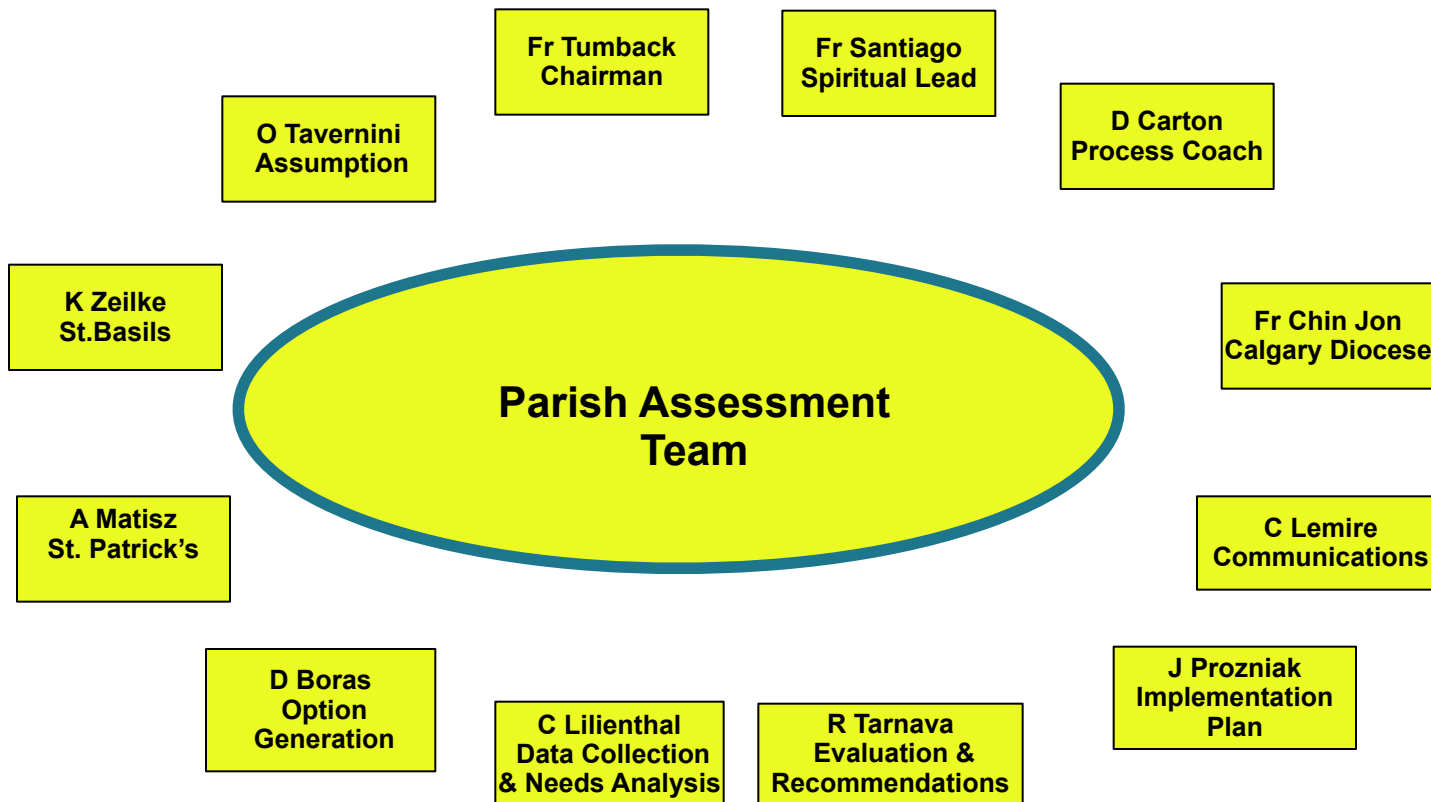
# East Lethbridge Catholic Parish Assessment Project

## Steering Committee



Additional support  
to be called on as  
needed:

# East Lethbridge Catholic Parish Assessment Project – Working Committee



Additional support  
to be called on as  
needed:

# East Lethbridge Catholic Parish Assessment Project – Committee Members

## Chair:

**D Boras  
Option  
Generation**

**C Lilienthal  
Data Collection  
& Needs Analysis**

**R Tarnava  
Evaluation &  
Recommendations**

**J Prozniak  
Implementation  
Plan**

**Fr Santiago  
Spiritual Lead**

**C Lemire  
Communications**

## Members

**O. Taverni; A. Matisz; B. Young; K. Zielke**

**H. Manzara**

**C. Vande Ligt; J. Prozniak; M. Roberts;  
P. Pothier; Fr K. Tumback; Fr. S. Torres**

**Fr K. Tumback; Fr. S. Torres; R Tarnava**

**Additional support  
to be called on as  
needed:**